

**TITLE: Print and Cut Calibration Process for the Gerber EDGE® and Plotters**

Category: Fast Facts/ Tips

Gerber FastFact #: 4300

Supplied by: Gerber Service

Last Modified: November 13, 2007

Summary: Procedure to calibrate the cut precision of one or more plotters to the printed output of an EDGE thermal printer

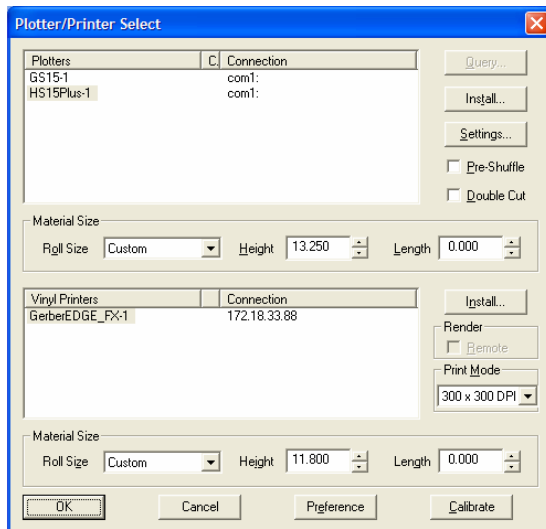
To get the maximum performance of your Gerber EDGE, EDGE 2 or EDGE FX and associated plotter, it may be necessary to calibrate the two devices together. To calibrate the plotter you print the provided test pattern, cut it, then make a slight adjustment to the software to align the cut lines to the printed shapes.



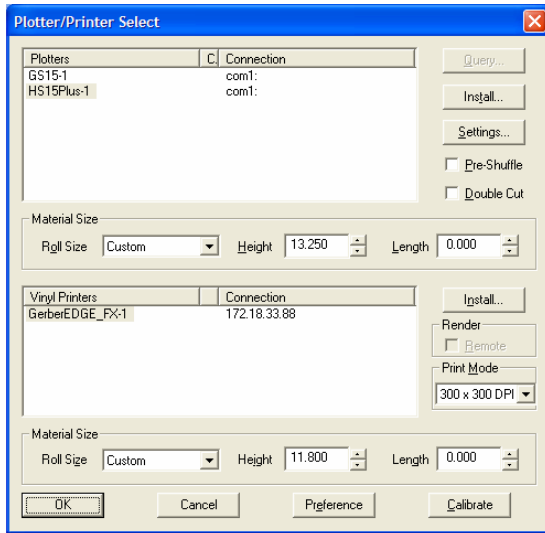
*Important Note: The calibration scale factor is stored in the OMEGA software setup files. It will adjust the scaling factor for the output to the plotter to match the EDGE printer. If the customer has multiple seats of OMEGA the calibration value needs to be entered at each software seat that will be used to output to that plotter. Any spl files created prior to this adjustment will continue to use the scaling factor from when the spl file was created.*

**➡ To first print and cut the plotter calibration test**

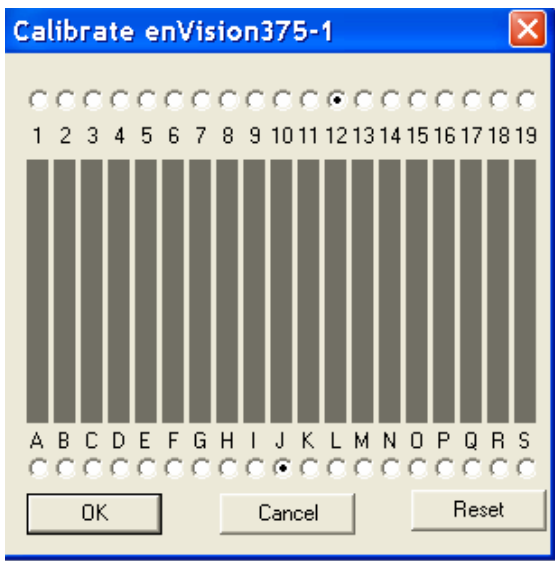
- 1 Click File > Open, the OMEGA Open dialog box appears.
- 2 Navigate to C:\Jobs\Calibrat. Select the job Calibrat.plt, this is the calibration test pattern plot file.
- 3 Click Open, the job appears on the screen.
- 4 Click File > Output All to send the job to GSPplot. The GSPplot menu will open.
- 5 Click Layout > Weed Border to turn off the weed border.
- 6 Click Setup > Device Select, the Plotter/Printer Select dialog box opens.



- 7 Choose the plotter to calibrate from the Plotters list.
- 8 Choose the printer from the Vinyl Printers list.
- 9 Click OK.
- 10 Click File > Print to Device to send the calibration pattern to the printer.
- 11 Print the file according to the instructions on the printer.
- 12 Load and align the printed test pattern in the chosen plotter.
- 13 Click File > Cut/Pounce. The plotter will cut a frame around the edge of the calibration pattern.
- 14 Weed away the thin strip that was cut around the boxes.
- 15 While in GSPplot, click Setup > Device Select, the Plotter/Printer Select dialog box appears.



- 16 Click Calibrate to open the Calibrate dialog box.



- 17 Choose the button that corresponds with the last numbered bar without black printed past the calibration frame.
- 18 Choose the button that corresponds with the last lettered bar without black printed past the calibration frame.
- 19 Click OK.
- 20 If you have multiple installations of OMEGA that are outputting to the plotter tested, use the values in your first calibration for each seat and enter that in GSPplot as instructed above in steps 15-20.



*Note: Once you calibrate a plotter, reopen the Calibrate Plotter dialog box. You will find that the system moves the lettered bar as close as possible to the center of the calibration pattern while maintaining the same relationship with the numbered bar. For example, if you click 14 and L, the system calibrates the plotter and displays the new positions of 12 and J.*